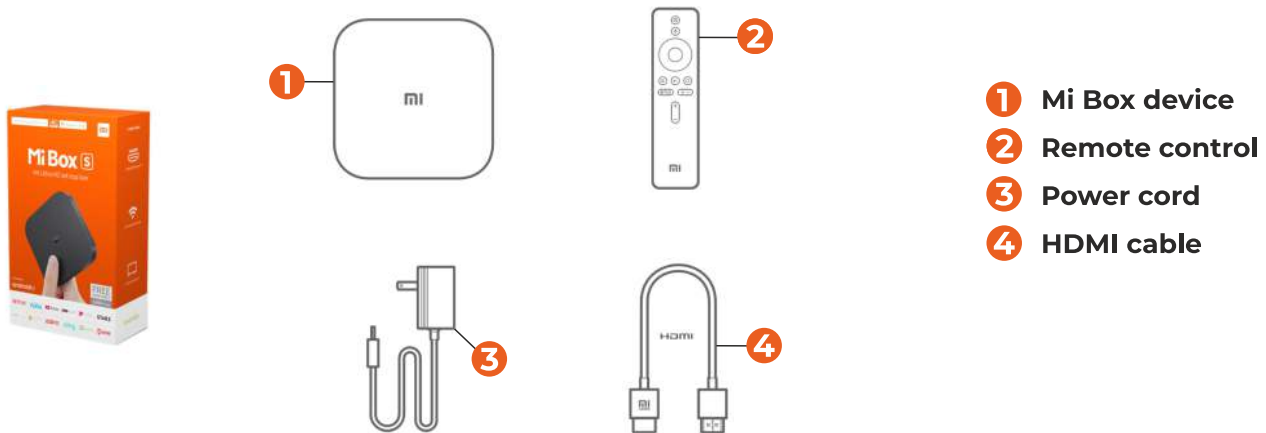


Mi Box User Manual

What is Mi Box?

The **Mi Box** device makes it easy to adapt an **Android operating system** to your TV. Mi Box is a leading Xiaomi media player that lets you enjoy a wide range of movies, series or applications (including in UHD/4K standard) on your TV.

Mi Box Package



Mi Box is easy to connect:



Mi Box User Manual

Install and configure the Mi Box in a few simple steps:



- 1** Connect the Mi Box to the TV via a HDMI cable, then to the power source.
- 2** Synchronize the remote control to the Mi Box.
- 3** Choose the HDMI source that the Mi Box is connected to using the TV remote control.
- 4** Connect the Mi Box to Wi-Fi.

For setup, please follow the steps on the TV screen.

**Go to the Google Play store and download the iNES Smart app
(see the iNES Smart User Manual).**